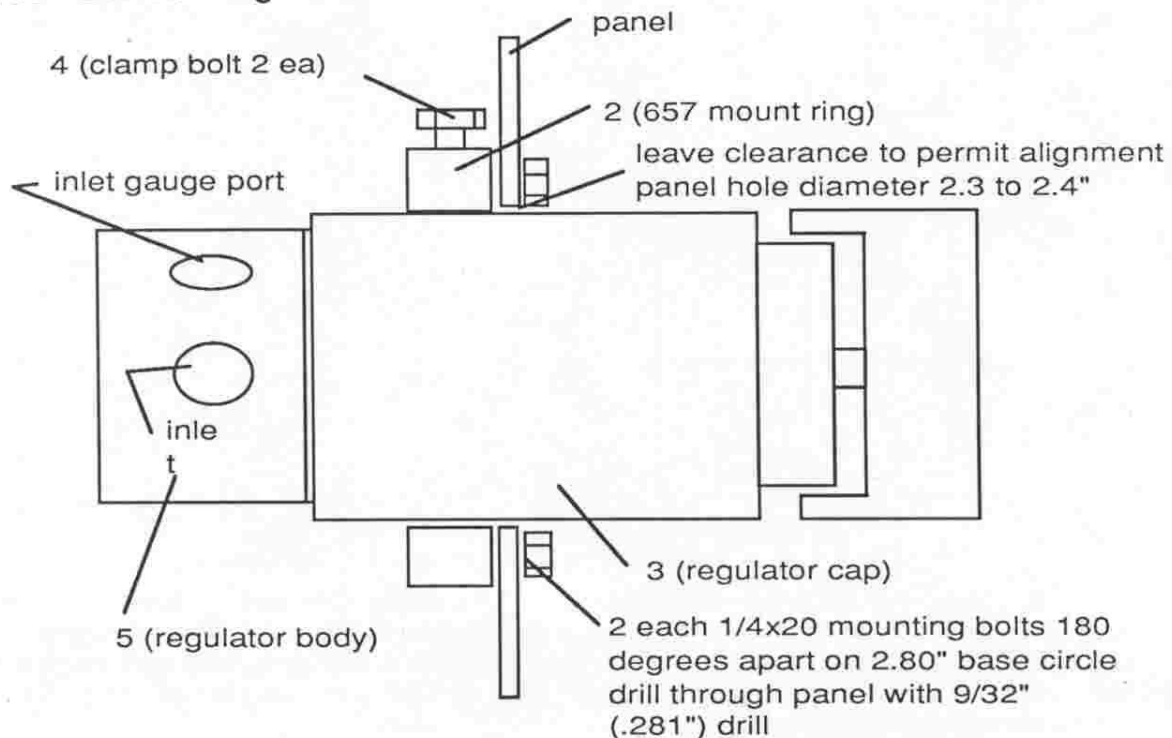


APPLICATION NOTE MOUNTING DIMENSIONS AND SERVICING OF PANEL MOUNTED REGULATORS

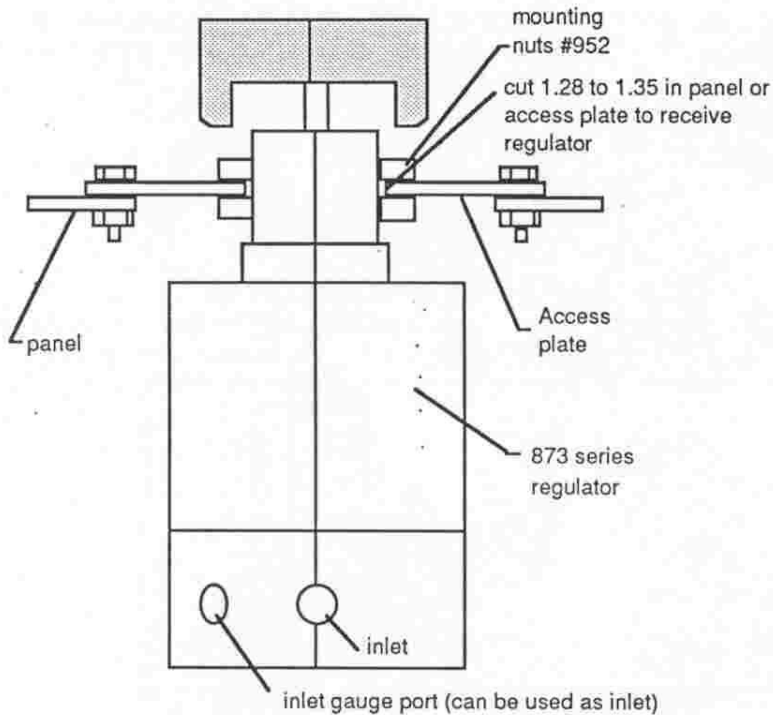
Aqua Environment regulators can be serviced from the front of control panels without having to disconnect piping connections. The following sketches and instructions show how this is done.

415 series regulators



1. When cutting mounting hole in panel insure there is some clearance so cap will not drag when being removed. A panel hole diameter of 2.30/2.40 works well.
2. To service regulator
 - a. Be sure gas supplies are disconnected and all pressure is vented off and back off adjusting knob to relieve spring tension.
 - b. Loosen two clamp bolts item 4 from behind panel. Alternately mount ring item 2 can be installed in front of panel if back panel access is difficult.
 - c. Using a strap wrench remove regulator cap item 3. Allow piping to hold regulator body in position. NOTE: The regulator cap need not be highly torqued onto body. Slightly more than hand tight is adequate for proper regulator operation.
3. All ports are 1/4" female pipe thread. The four ports, inlet, inlet gauge, outlet gauge and outlet are 60 degrees apart as shown. The inlet and outlet gauge ports can be used as the inlet and outlet if more convenient due to pipe location etc.

873 series and 1120 regulators



The 873 series and 1120 regulators use 1 1/4" mounting nuts part number 952. To gain access to the larger regulator bodies a larger hole (about 3.5" diameter) is made in the panel and an access plate used as shown. Otherwise access is similar to the 415 series regulators. If front panel servicing is not required drill a 1.28 to 1.35 diameter hole in the panel. This eliminates the need for the access plate.

Inlet port, inlet gauge port and outlet gauge port are 1/4" female pipe thread. Outlet port is 1/2" female pipe thread. Ports are located 60 degrees apart as shown.

Aqua Environment Inc.